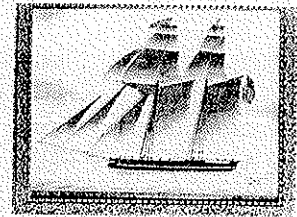


Robbinston Historical Society

Post Office Box 39
Robbinston, Maine 04671

Phone: 207-454-8121



Hello again!

Fall is here but it still looks like summer. Perhaps Mother Nature is treating us for surviving the rough winter. Leaves and grass are green, dandelions, golden rods, asters and orange hawkweed fill the woodlands. And the Society took advantage of our cool summer.

At the July meeting, President Mary Ann Duvall said that the Memorial Garden was revived. Though we lost a tree, a flowering crab apple tree was moved over to replace it. The hitching post and the granite bench (bench donated by Muriel Robinette in memory of her parents) were reset. Winter's frost and ice had heaved them up. Then members weeded and mulched the garden and restored the peaceful spot.

During August, a gang of three dusted, vacuumed and washed the Chapel windows to ready it for the upcoming September Anniversary Concert. Later in the month, Nancy Christie with her husband and friends toured the Chapel and Visitors Center. Nancy is one of the three daughters of Ruth and Edward Steenstra that gave not only the Chapel but the adjacent property to the Society in 1999. And in honor of Bob Henkel, she made a very generous donation for which the Society is most grateful. Her letter is attached.

On Friday evening, September 12th, the Grace Chapel was filled with "Eight Centuries of Music" performed by The Wallpaper Quartet. What a great pleasure to hear the music of Telemann, Bach, Mozart Haydn, along with Poulenc, McCartney & Lennon. The grand finale featured a 1907 song by John Bratton—The Teddy Bear's Picnic. And your old editor knew all the words! Everyone enjoyed the spiritually uplifting evening. The Society thanked the players: Jane Hinson from Machias; Chris Guida from Edmond Township; Sarah Dalton-Phillips from Campobello and Helen Swallow from Pembroke for sharing their artistic talents with us.

With October nearly here, the Society is focusing on our annual Christmas Tea—scheduled for Saturday, 11 a.m., December 6th at the Visitors Center. With a six-dollar donation you will get a seat at a table and be served with tea, sandwiches and sweets. This event is always a big hit with games, singing, raffles, and seeing friends. But most important, to watch the always unique entertainment provided by our Vice President Carol Hollingdale.

Now for a few reminders: The schooner you see up top is the Challenge. Built at Robbinston, Maine in 1836. A schooner of 194 tons—length 90 feet 8 inches—beam 20 feet 9 inches—draft 10 feet 2 inches. The Challenge was owned in 1841 by Lorenzo Wheeler, John Valpey was captain. Valpey was widely known in shipping circles and in the fifties was master of the vessel Carbon, also a Robbinston built vessel.

The Grace Chapel and the Visitors Center are available to use for memorials, weddings, meetings, etc. A donation to the Society is--Half day \$50; All day \$100. Simply call: 454-2782 or 454-3455 for availability.

The Society's monthly meetings are held from March through November on the third Thursday of the month, 7 p.m., at the Visitors Center—505 US Rt. 1 in Robbinston and everyone is welcome.

Membership dues: Please help us meet our 2014 budget goals. The Society operates on the calendar year. Eighteen of our 67 members may have forgotten to send their dues. It's \$15 for a single member and \$20 for a household. We are truly grateful for your support.

And here to enjoy are photos from previous Christmas Teas and of days gone by...



603 Thunderbird Dr.
Prescott, AZ 86303

August 5, 2014

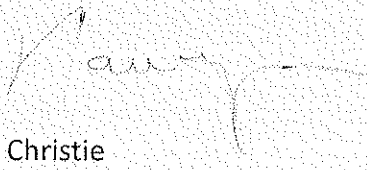
Dear Society Members,

Please accept the enclosed as a token of my appreciation for the huge contribution made by the late Bob Henkel to the founding and development of the Robbinston Historical Society. No task was too small, no challenge too overwhelming, for Bob's vision, energies and talents. The Society has truly lost a "giant."

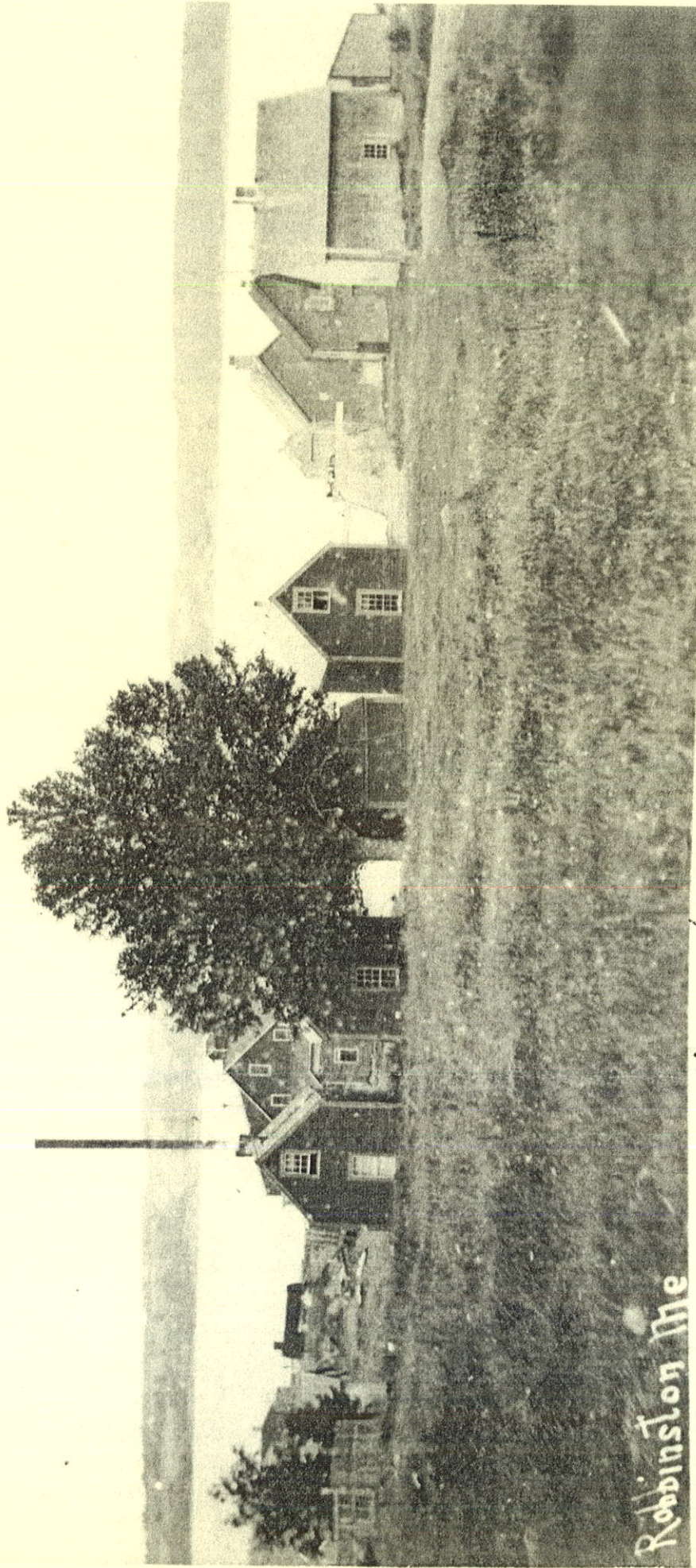
Bob and his wife Bobbi were instrumental in supporting the idea of accepting ownership of the Grace Chapel by the then-fledgling Robbinston Historical Society, and helping to orchestrate its transfer to the Society in 2000. For their interest, support and foresight, the Steenstra family is eternally grateful. Such a huge responsibility for a new organization, but through hard work and strong community involvement over the years, the Chapel and Visitors' Center have become a focal point for the Town, hosting a number of annual events that are well-attended by the community.

The enclosed gift is made in Bob's honor. Please apply it to the Chapel Trust Fund or to a current need, at your discretion.

With the deepest sympathy for your loss, but in gratitude for having crossed paths with this very special person,

A handwritten signature in cursive script, appearing to read "Nancy Christie". The signature is written in dark ink and is positioned above the printed name.

Nancy Christie



Robbinston Me

Set of Camps in front of Holmes Lardine factory

